



EBOOK

# Top 10 Dashboards from Rocket® Servergraph®



# Contents

---

- 3 Introduction
- 4 Top 10 Rocket Servergraph® Dashboards
- 5 Summary of the Entire Backup Environment
- 6 30-Day Backup Status of All Nodes
- 7 Client Overview (All Clients from All Backup Applications)
- 8 Backup Status by “Scope”
- 9 Daily Activity Dashboard
- 10 Fastest Growth
- 11 Alerts and Monitoring
- 12 Automated Billing with Chargeback
- 13 Long Term Trend Graphs
- 14 Your Critical Dashboard
- 15 Summary

# Introduction

---

Rocket® Servergraph® is all you need to ensure optimal performance and execution from your data protection investment. Servergraph helps your data protection “first responders” (backup operations teams, storage administrators) become proactive and more strategic. It monitors your entire backup environment, regardless of how many tools from different vendors have been implemented, and provides automated dashboards and reports allowing you and your team to better manage your data protection processes, costs, and risks.

Servergraph distinguishes itself by providing a single monitoring console for your entire data protection environment offering real-time, in-depth, and comprehensive views of your infrastructure.



*We have been using Servergraph daily and I believe that it has saved me untold hours of troubleshooting and monitoring and my supervisors can see that.*



Mike Burke,  
System Administrator,  
Monroe County, NY

# Top 10 Rocket Servergraph Dashboards

In production environments, IT Managers customize Servergraph dashboards to meet their unique requirements. Based on our experience, Servergraph dashboards can be categorized into four main groups or views of the data protection environment:

1. Overviews of the entire, heterogeneous backup environment for managers
2. Overviews of devices and applications being monitored, for non-backup technical professionals
3. Detailed views of different parts of the backup environment, for backup administrators and specialists
4. Customized views of specific backup nodes for internal business partners (e.g. Finance, HR, Sales, etc.)

## Rocket Servergraph Supports



Following are examples of ten core Servergraph dashboards that any backup professional will find essential for monitoring the health of backup environments.

NUMBER **1**

# Summary of the Entire Backup Environment

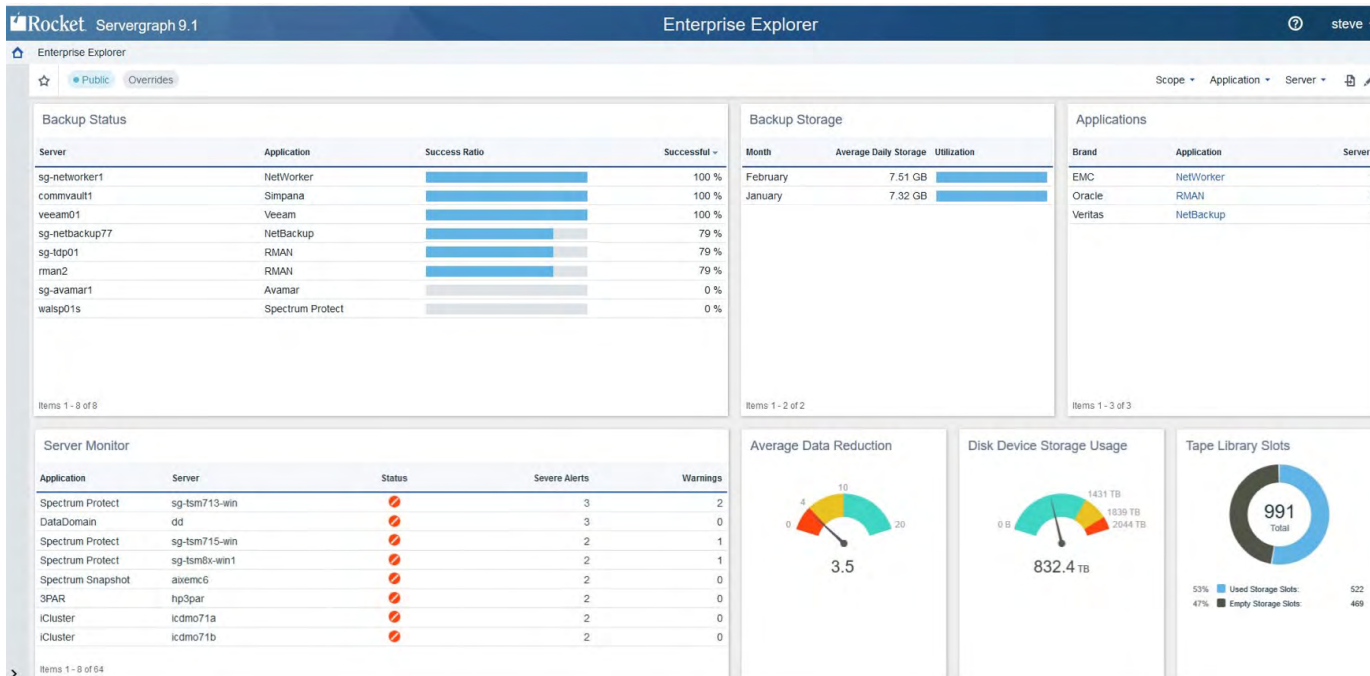
This dashboard shows the entire environment and all backup platforms. You can view backup performance by application, server, size of backup, and virtual tape library.

**USERS**

- Administrators
- IT Managers

**BENEFITS**

Provides an overview of the entire backup environment, with the ability to drill-down for additional detail. Visibility to the entire backup environment helps you better manage complex, multi-vendor backup environments to more efficiently use resources.



# NUMBER 2

## 30-Day Backup Status of All Nodes

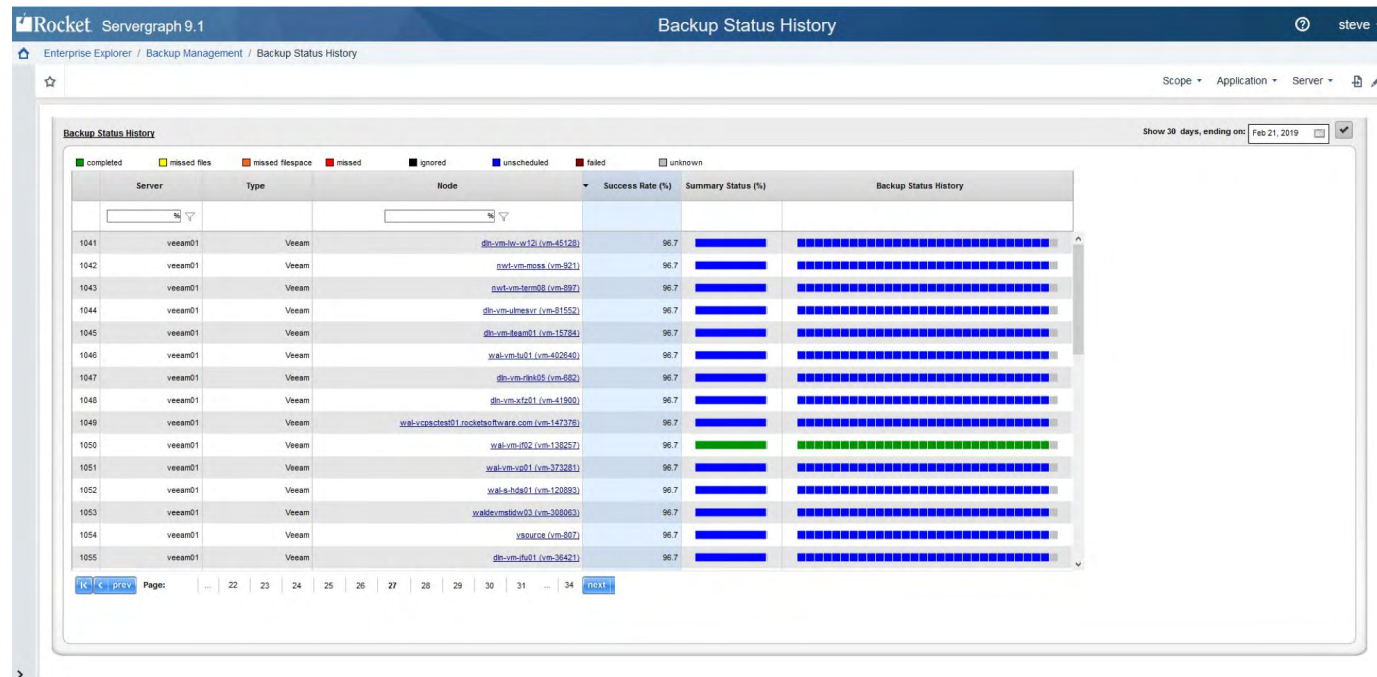
This dashboard shows the status for 30 days for all nodes, regardless of backup type. It provides the success ratio and visual cues for each, to identify successful operations as well as trouble spots. This view has filters, including customizable categories called “scopes”.

### USERS

- Administrators
- IT Managers

### BENEFITS

Centralized 30-day backup statuses of all nodes for easier management and troubleshooting. It also allows further drill-down for historical performance and analysis for SLA, vendor, and end-user management.



# NUMBER 3

## Client Overview (All Clients from All Backup Applications)

This dashboard shows an overview of all clients by server type and operating system, with total clients presented as a list. This can also serve as the backbone for automating accurate storage billing or cross-charging.

### USERS

- Administrators
- IT Managers
- Finance

### BENEFITS

Customers typically need to view their backup performance multiple ways. Provides comprehensive data on all clients by server type and operating system for easier client assessment.

**Backup Sessions**

Server	Sessions	Total Size
sg-avamar1	5	2.7 MB
walsp02p	41	2.9 GB
walsp02s	38	2.69 GB
commvault1	3	151.29 MB
sg-netbackup77	14	99.53 MB

**Backup Success Rate**

Server	Application	Today/Last Week	Success Rate
sg-netbackup77	NetBackup	77.00 %	77.00 %
sg-networker1	NetWorker	100.00 %	100.00 %
walsp02p	Spectrum Protect	100.00 %	100.00 %
walsp02s	Spectrum Protect	100.00 %	100.00 %
sg-avamar1	Avamar	0.00 %	0.00 %

**VM Session by Host**

VM Host	Application	Today/Last Week	Current Session Size
walprducSORacle01.rocketsoftware.com	Veeam VM	1.01 TB	1.01 TB
walprducSORacle02.rocketsoftware.com	Veeam VM	149.21 GB	149.21 GB
wal-vm-vc02.rocketsoftware.com	Veeam VM	2.43 TB	2.43 TB
dln-vh-dev01.rocketsoftware.com	Veeam VM	0 B	0 B
dln-vh-dev03.rocketsoftware.com	Veeam VM	0 B	0 B

**Clients at Risk**

Client	Application	Server	Consecutive Failures	Total Failures (30 days)
sg-rhei5-15	NetBackup	sg-netbackup77	0	8
Fake_Client_Add_1	NetBackup	sg-netbackup77	2	30
nwt-vm-kbm4w3dm	NetBackup	sg-netbackup77	2	30
wal-vm-iv01 (vm-946...	Veeam	veeam01	1	26
sg-netbackup5a	NetBackup	sg-netbackup77	2	26

# NUMBER 4

## Backup Status by “Scope”

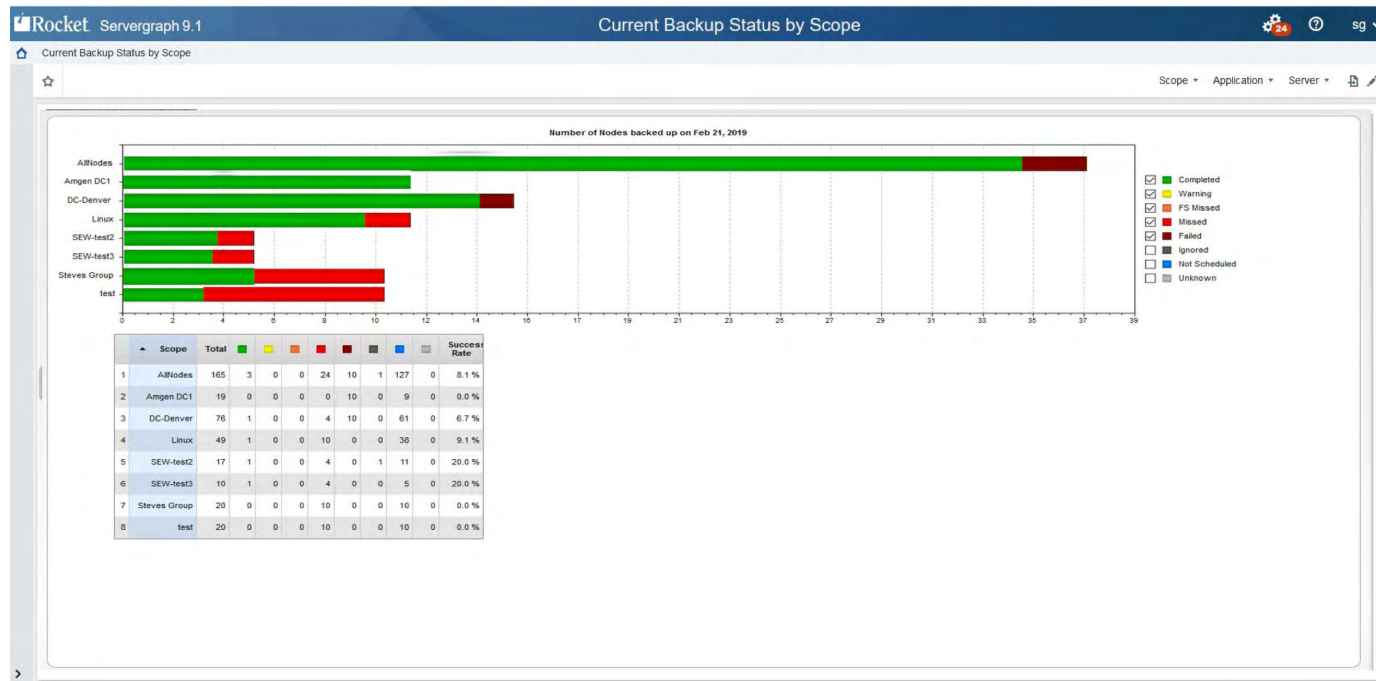
A “scope” is a group of nodes defined by the administrator based on any criteria that is important for them to monitor, forecast, or report on (e.g. Departments, Data Centers, Customers, or Application). This dashboard shows backup status by location and department scopes. The color-coded chart complements the table of data.

### USERS

- Administrators
- IT Managers

### BENEFITS

Viewing your data protection metadata by user-customizable scopes enables you to better monitor, troubleshoot, and forecast for those areas that are most important to your organization.





NUMBER **5**

# Daily Activity Dashboard

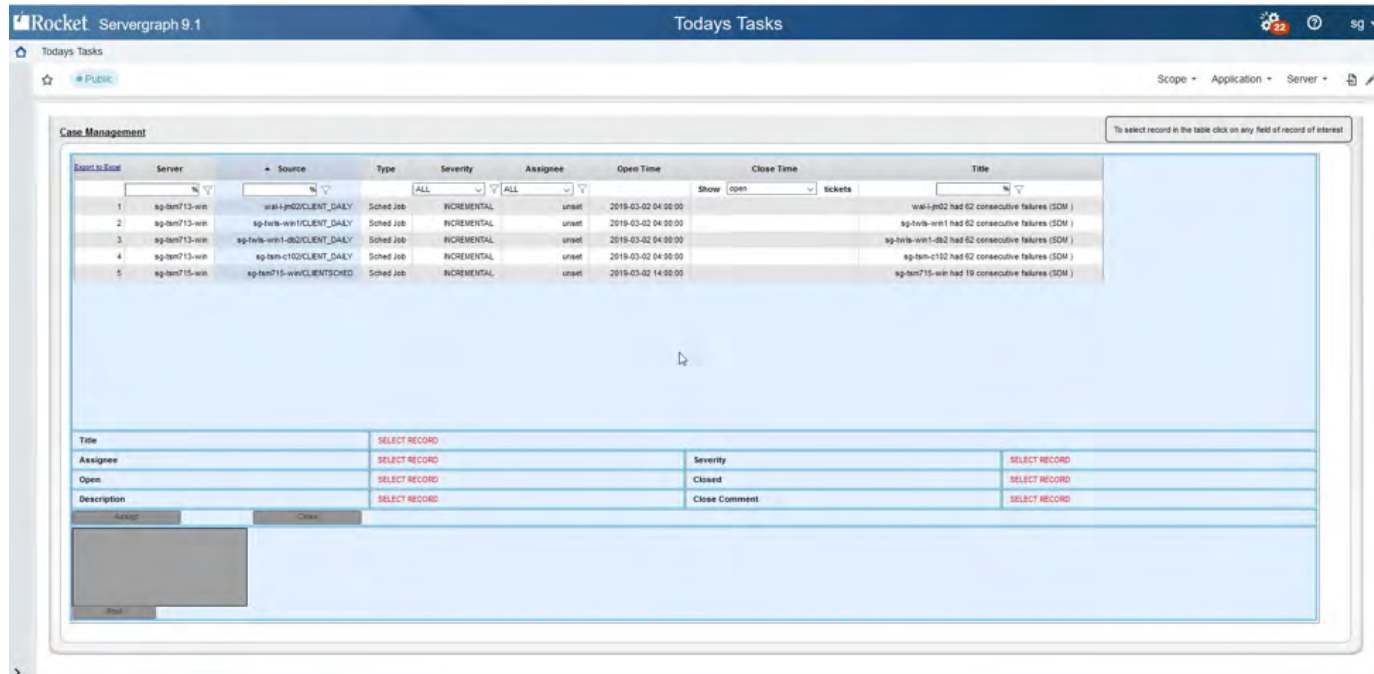
In addition to providing alerts for critical issues, Servergraph can help your team manage day-to-day tasks. You can define criteria in this dashboard to surface issues that need attention right away, then assign and track resolution of those issues either right inside Servergraph or in your service management tool.

**USERS**

- Administrators
- IT Managers

**BENEFITS**

Bubble-up the issues you think are important, to be sure they're not overlooked. Assign them and track resolution using the system that works best for your organization.



NUMBER  
**6**

# Fastest Growth

This dashboard can be used to identify excessive resource consumption trends by tracking the changes in storage capacity, amount of storage used, and number of file changes by node. With Servergraph you can quickly identify fastest growing nodes, fastest growing VMs, nodes utilizing the most storage, and the nodes running most slowly (which may be tying up resources inefficiently).

**USERS**

- Administrators
- IT Managers
- CIOs
- Business Users

**BENEFITS**

This can help you spot potential problems before they get out of control and improve capacity planning efforts. Servergraph includes many similar dashboards to give you insight needed for capacity and end-user SLA management or vendor negotiations.



# NUMBER 7

## Alerts and Monitoring

Servergraph integrates with the alerting capabilities of your entire data protection environment. This dashboard consolidates the events from across that environment into a single place, making it much easier for administrators to keep track of everything going on across your environment. Servergraph can help simplify research, accelerate troubleshooting and avoid missed signs of trouble.

### USERS

- Backup and Storage
- Administrators and Managers

### BENEFITS

This consolidated view helps backup and storage administrators stay on top of your environment, and more easily troubleshoot and mitigate potential problems.

Application	Server	Status	Severe Alerts	Warnings
Spectrum Protect	walsp01p	🔴	6	1
Spectrum Protect	walsp01s	🔴	5	0
NetBackup	sg-netbackup77	🔴	4	0
Spectrum Protect	walsp02p	🔴	3	3
Spectrum Protect	walsp02s	🔴	3	3
IBM i	aldevl	🔴	3	2
DataDomain	dd	🔴	3	0
RMAN	rman2	🔴	2	1
NetWorker	sg-networker1	🔴	2	0
Simpana	commvault1	🔴	1	1
RMAN	sg-tdp01	🔴	1	1
Veeam	veeam01	🔴	1	1
Spectrum Protect	sg-tsmibx-win4	🔴	1	0
Avamar	sg-avamar1	🟡	0	2
Spectrum Protect Plus	ga10.1	🟢	0	0
Unix	waldevsyadm01	🟢	0	0

Time	Status	Server	Summary
Feb 19 22:07	🔴	commvault1	The percentage of successful backup job ...
Feb 19 22:07	🔴	sg-commvault	The percentage of successful backup job ...
Feb 19 22:07	🟡	commvault1	1 node(s) are required version update.
Feb 19 22:07	🟡	sg-avamar1	1 backup job(s) failed in last 24 hours.
Feb 19 22:07	🟡	di-d-yjian.rocketsoftw...	7 backup attempts failed in last 7 days.
Feb 19 22:07	🔴	sg-nbu-c005	The percentage of successful backup job ...
Feb 19 22:07	🔴	sg-nbu-c017	The percentage of successful backup job ...
Feb 19 22:07	🔴	sg-nbu-c014	The percentage of successful backup job ...
Feb 19 22:07	🔴	sg-netbackup77	The percentage of successful backup job ...
Feb 19 22:07	🔴	sg-nbu-c003	The percentage of successful backup job ...
Feb 19 22:07	🔴	sg-nbu-c002	The percentage of successful backup job ...
Feb 19 22:07	🔴	sg-nbu-c018	The percentage of successful backup job ...
Feb 19 22:07	🟡	sg-netbackup5a	6 backup attempts failed in last 7 days.
Feb 19 22:07	🟡	Fake_Client_Add_1	7 backup attempts failed in last 7 days.
Feb 19 22:07	🔴	sg-nbu-c001	The percentage of successful backup job ...
Feb 19 22:07	🟡	mft-vm-kbm4w3dm	7 backup attempts failed in last 7 days.
Feb 19 22:07	🟡	sg-rhel5-15	2 backup attempts failed in last 7 days.
Feb 19 22:07	🔴	sg-nbu-c016	The percentage of successful backup job ...
Feb 10 22:07	🔴	sg-nbu-c004	The percentage of successful backup job ...

NUMBER **8**

# Automated Billing with Chargeback

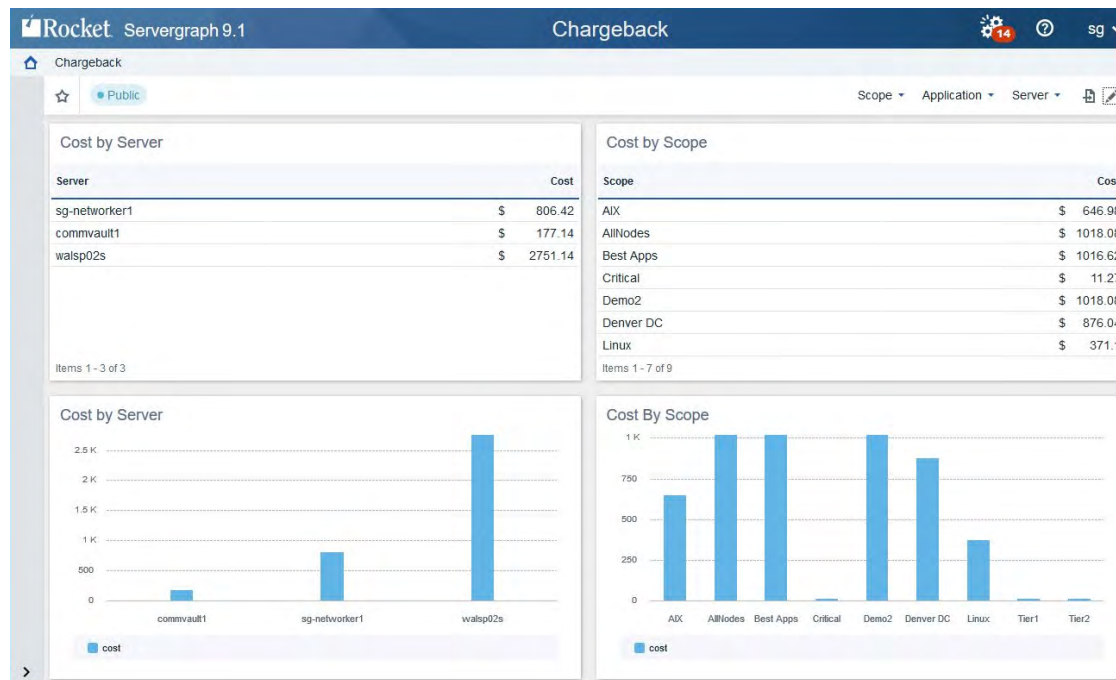
Servergraph can provide billing and chargeback details to department heads and others across your organization. You can base chargebacks on your own parameters, and even create specific billing rates for different media, onsite vs. offsite storage, or any other variables. °

**USERS**

- Administrators
- IT Managers

**BENEFITS**

Many organizations struggle to manage the reporting process for their chargebacks. Servergraph's user-defined parameters and dashboards make it easy.



NUMBER 9

# Long Term Trend Graphs

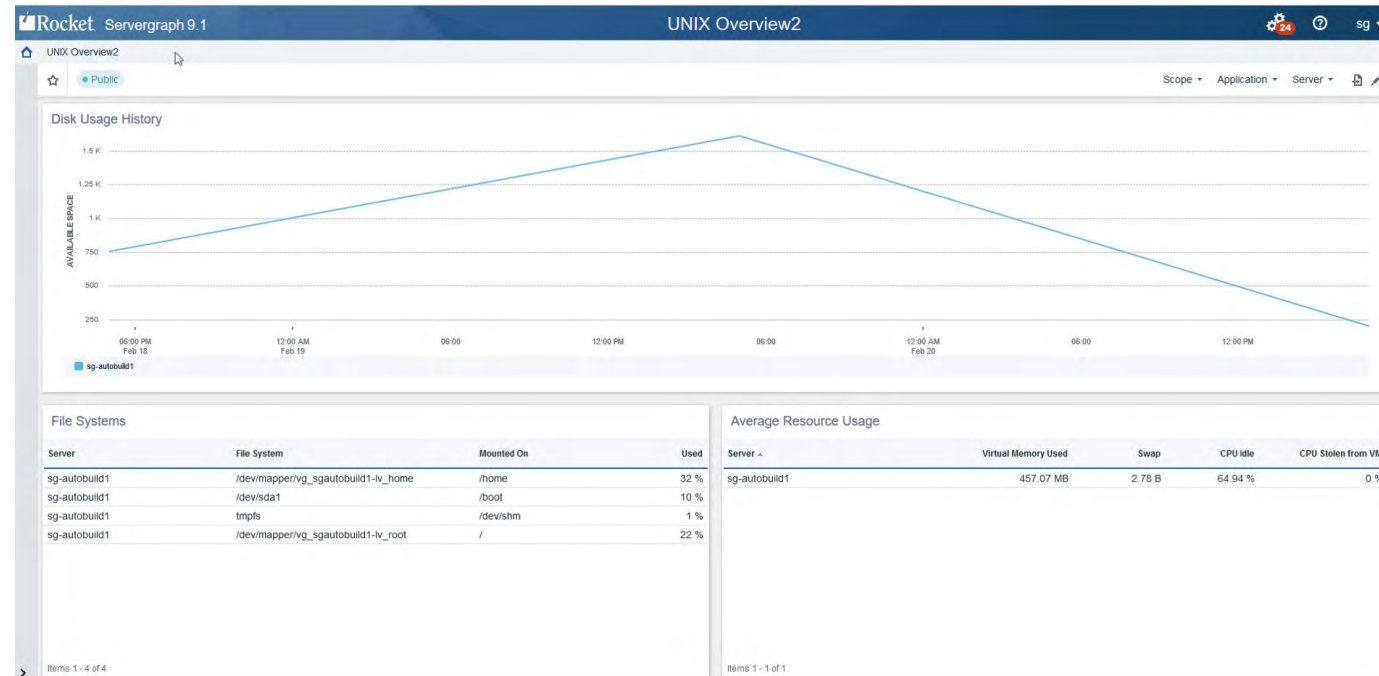
Servergraph can show you what is happening by server, node, backup application, or scope, and give you visibility into their trends over time. This helps you understand what's happening today and helps you predict what is likely to happen in the future.

**USERS**

- Administrators
- IT Managers
- CIOs
- Business Stakeholders

**BENEFITS**

Trending dashboards are very useful for IT business planning, and provide fundamental information for governance and compliance.



## Your Critical Dashboard

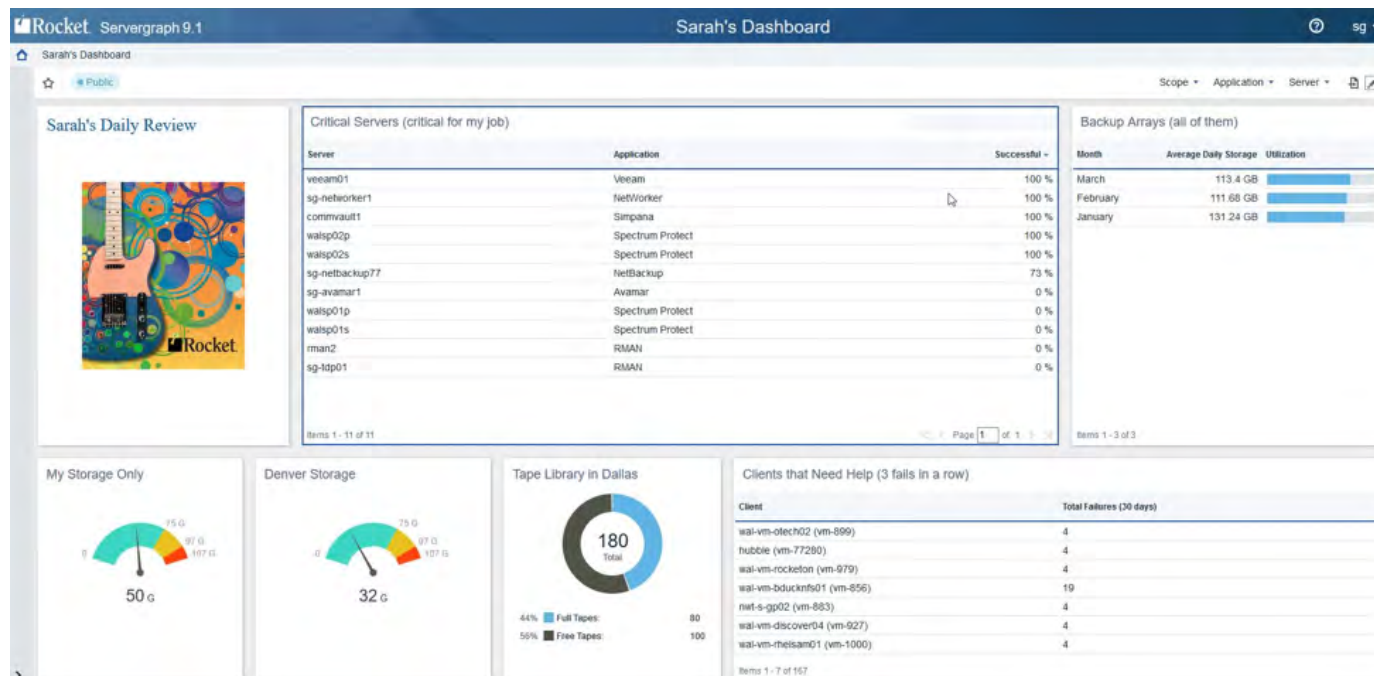
It is easy to customize or create dashboards to suit the needs of most any user group or organization. If we don't give you just what you need out of the box, simply create what you want, using the dashboard builder. You can even enable self-service and cut back on IT requests.

## USERS

– Anyone who needs visibility to data protection status

## BENEFITS

Quickly create the data protection dashboards your different user groups need, across the organization. Get the monitoring you need and improve the service levels you offer your customers.



# Summary

---

Rocket recognizes that every customer has specific requirements for data protection monitoring and dashboarding that are unique to the configuration and needs of their environment. Servergraph has been designed to be the monitoring solution you need it to be—monitoring across hardware and software vendors, and providing simple configuration of virtually any dashboard you might need.

Servergraph helps your data protection team better serve the needs of the business, by virtually eliminating the time spent generating daily reports and letting them focus on solving data protection problems. Get higher backup success rates, improved visibility to issues as they arise, simplified troubleshooting, and dashboards aligned to the unique needs of each group of stakeholders.

Servergraph helps you ensure optimal performance and effectiveness from your data protection investment.

Find out more by calling us at: +1.855.577.4323 or visiting our website:

Learn More about  
Rocket Servergraph



-  [rocketsoftware.com](https://rocketsoftware.com)
-  [info@rocketsoftware.com](mailto:info@rocketsoftware.com)
-  US: 1 855 577 4323  
EMEA: 0800 520 0439  
APAC: 612 9412 5400
-  [twitter.com/rocket](https://twitter.com/rocket)
-  [www.linkedin.com/company/rocket-software](https://www.linkedin.com/company/rocket-software)
-  [www.facebook.com/RocketSoftwareInc](https://www.facebook.com/RocketSoftwareInc)
-  [blog.rocketsoftware.com](https://blog.rocketsoftware.com)